



NETHERLANDS ANTILLES CANOE FEDERATION



ST MAARTEN

SOUALLIGA CHALLENGE

23 SEPTEMBER 2007



CARIBBEAN OCEAN RACING CUP SERIES RACE # 2

St. Maarten Soualiga Challenge Sint Maarten, Netherlands Antilles

The Netherlands Antilles Canoe Federation is pleased to invite your Federation to participate in the St. Maarten Soualiga Challenge. This race is the second event of the Caribbean Ocean Racing Cup 2007.

DATE AND VENUE

The St. Maarten Soualiga Challenge will be held on **23 September 2007**, in Sint Maarten, Netherlands Antilles.

RULES OF COMPETITIONS

The competition will be conducted according to the ICF Draft Ocean Racing Rules (V 2006.01) with the following exceptions.

- I.2 There will be no ICF accredited official in charge of the event.
- I.4 Classes will be as follows:
 - Surfski Single (S1), male and female
 - Surfski Doubles (S2), male, female and mixed
 - Sea Kayak Single (SK1), male and female
 - Sea Kayak Double (SK2), male, female and mixed
- II.6 There will be no weight limitations on the craft.
- II.7a This section is replaced by:
 - Surfskis are of a closed hull design, with the paddler(s) seated in indentations molded into the hull. Any hatches opening into the hull will be mechanically fastened in a way to prevent accidental opening while at sea.
 - Sea Kayaks are equipped with a cockpit that the paddler(s) sits inside. The cockpit should be close fitting to allow the craft to be gripped with the thighs and should be closed with a well fitted splash cover. The craft should have adequate buoyancy to remain afloat even when swamped. Any hatches opening into the hull will be mechanically fastened in a way to prevent accidental opening while at sea.
- III.9 This section will be changed to read "If circumstances permit, one person may function in two or more of the above positions."
- IV.22 The colour of the start buoy and flags will be stated in the course instructions.
- IV.28 This section will not be used and will be replaced by the attached safety requirements.

COURSE

The race will be conducted in the Atlantic Ocean in the channel between St. Barthelemy, French West Indies and Sint Maarten, Netherlands Antilles. The area normally has winds of 15 knots and swells of 1.5 meters from the southeast. The race will consist of a single 25km down-wind run starting in Gustavia, St. Barthelemy and finishing in Oyster Pond, Sint Maarten. Additional course details will be found in attachment A.

CLASSES

The event will be open to the following classes:

Surfski Single (S1), male and female
Surfski Doubles (S2), male, female and mixed
Sea Kayak Single (SK1), male and female
Sea Kayak Double (SK2), male, female and mixed

Classes will be split into age groups as dictated by the entries.

EVENT SCHEDULE

Saturday 22 September 2007

1800 Registration and Briefing

Sunday 23 September 2007

0700 Bus departs from Oyster Pond
0745 Ferry departs from Pelican dock
0830 Expected arrival in St Barths
0915 Start of Caribbean Ocean Racing Cup Series Race 2
1200 Lunch, Oyster Pond
1330 Award Ceremony, Oyster Pond

ENTRIES

All entries should be submitted to the organizing committee before 9 September 2007. All entries must include National Federation represented, full name, date of birth and passport number of all competitors and accompanying team members. Individual entries will be accepted subject to the ICF Draft Ocean Racing Rules.

Email: thebrowns@domaccess.com

Fax: +599 543 6029 Tel: +599 557 1990

IDENTIFICATION OF BOATS

To help with identification at the sea, adhesive numbers must be displayed on either side of the bow of the craft.

AWARDS AND CEREMONIES

The first three places of each class will receive medals. To maintain the dignity and solemnity of the presentation ceremony the competitor receiving medals must be neatly attired.

SECURITY MEASURES

Security will be provided by a fleet of motor boats accompanying the race. Medical assistance and first aid will be available from the St Marten Sea Rescue and the SNSM vessels as well as at the finish in Oyster Pond.

TRANSPORT

The organizers will assist with transport from the airport to the hotel, to the race venue and to the airport where possible. Please contact the organizers with your requirements.

Yours faithfully

Allan Macdonald

President, Netherlands Antilles Canoeing Federation

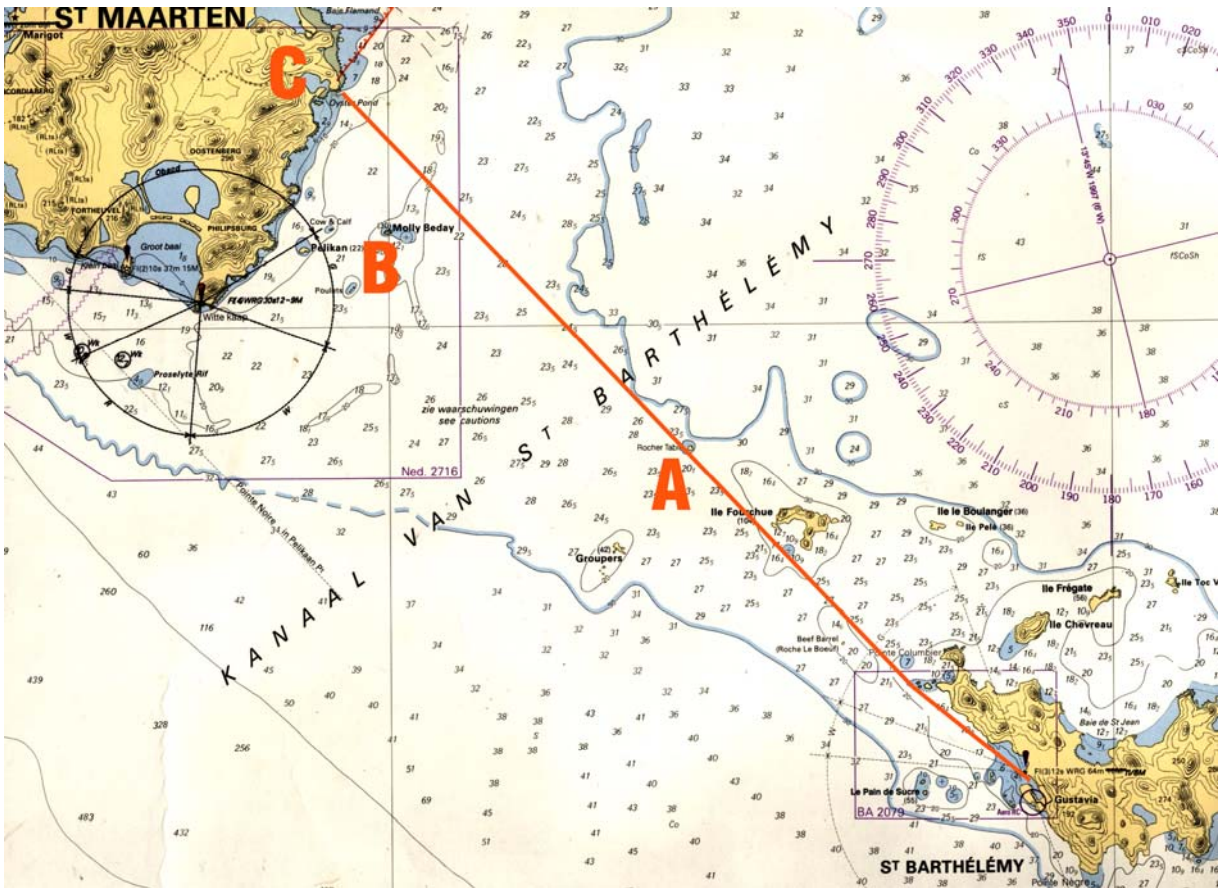
Course

The course will be as follows:

- 1) The race will be started using a **stationary start**, in the water. The start-line will be between a Budget Marine Buoy and an anchored boat displaying an orange flag off Public Beach in St Barths.
- 2) Proceed westwards to the point of St Barths.
- 3) Proceed towards Oyster Pond, St Maarten, passing to the south of Isle Fourche.
- 4) Leave the green approach mark for Oyster Pond (position 18°03.066'N 063°00.441'W) to port.
- 5) Enter Oyster Pond and finish between the Budget Marine mark and the orange flag on the Captain Oliver's Restaurant deck.

Note

- 1) Sea conditions for the course will vary. The first 3km is usually calm. Thereafter one can usually expect a following to quartering swell of 0.5m to 1.6m. There can be flat calm conditions on rare occasions and on other occasions, there can be a following to cross swell of up to 2.5m. A current of varying strength usually flows from north to south.
- 2) The wind is usually a following to quartering, 10 to 20 knots, with 12 to 16 knots being the most common condition.
- 3) Navigation is the responsibility of the competitor. It is recommended that all competitors make themselves familiar with the nautical charts of the area.
- 4) A direct course from Isle Fourche to Oyster Pond takes you very close to Rocher Table which is shown at position A on the attached chart extract and located approximately 1.5Nautical Miles (2.8km) from Isle Fourche. You should aim to pass very close to the north or south of this rock.
- 6) Molly Beday rock, marked B on your chart extract lies well to the south (0.9NM or 1600m) of the direct course. If you are close to or to the south of Molly Beday, alter course to the North immediately.
- 7) After rounding the green approach mark to Oyster Pond, proceed directly into Oyster Pond. Be aware of some breaking waves and shallow areas near the headland.
- 8) There will be a strict 2 hour cut off enforced at Rocher Table. All competitors not reaching Rocher Table at least two hours after the start will be scored a DNF and asked to board the safety boat.



Course from Gustavia, St Barths to Oyster Pond, St Marten. Note that the course passes close to Isle Fourche and Rocher Table (A) and well to the North of Molly Beday (B).



St Marten from the direction of St Barths from approximately 4.5km offshore. The arrow indicates the position of the approach mark off Oyster Pond.



A indicates the mouth of Oyster Pond and B the green approach mark.



The start off Public Beach, St Barths.



The approach to Oyster Pond and the finish Line in St Maarten.

Safety Regulations

The following safety regulations must be observed:

- 1) Each competitor will carry at least 1.5 litres of water attached to their person or craft at the start of the race.
- 2) Each competitor in the surfski classes (only one in the case of a double) will be attached to their craft with a sturdy leash from before the start until after crossing the finish line.
- 3) Each competitor will carry on their person, either:
 - a) One hand held signal flare with burn time at least 1 minute.
 - b) Three mini aerial flares with launcher
(flares will be available at briefing for approximately \$10)
- 4) At least one paddle blade must be painted a conspicuous colour to assist in attracting a safety boat's attention when in distress.
- 5) All craft with an opening or openings (cockpit, storage etc.) that open into the hull will be fitted with suitable buoyancy material that will keep the craft and competitor afloat and mobile if swamped. A buoyancy test will be carried out if, applicable.
- 6) If conditions dictate, the race committee will change the course to the alternate course, no later than 0700 on 23 September 2007.

Further, it is recommended that:

- 1) Each competitor wears a suitable PFD.
- 2) Each craft is equipped with a compass or GPS to assist with navigation.
- 3) A leash is used to connect the paddle to the competitor or to the craft.
- 4) Each competitor carries a waterproof VHF radio or cell phone.

Note

- 1) It is the responsibility of each competitor to determine for themselves if they have the skills and conditioning required to compete in this event. **This responsibility should be taken seriously.** A competitor should not place themselves and others at risk by entering this race if it is beyond their level of skill or conditioning. There will be safety boats on the water during the races. If a safety boat is required to rescue an individual or feels the need to closely monitor them, then that safety boat is being taken away from the rest of the race course and the rest of the other competitors...putting everyone at additional risk.
- 2) It should be kept in mind that weather and water conditions can change rapidly. If a competitor determines during the race that they are at risk, they should abandon the race and head toward a rescue boat. In this case, the competitor should ensure that the race officials at the finish are informed of their withdrawal as soon as possible.
- 3) Any competitor can be instructed to abandon the race by the chief safety judge, should the judge be of the opinion that the competitor would be putting themselves or others at undue risk by continuing with the race.

Accommodation

The following accommodation is available within walking distance of the briefing and finish area at Oyster Pond:

- 1) **Captain Oliver's Hotel** (+590 590 87 40 26)
 - a) Double room, for \$70 per night with a \$15 for an extra person.
- 2) **Columbus Hotel** (+590 590 87 42 52)
 - a) Suite, 4 persons, \$130 per night
 - b) Suite, 2 persons \$85 per night plus \$16 for an extra person
 - c) Studio, 2 persons \$79 per night
 - d) Master, 2 double rooms plus 2 sofa beds \$126 per night
- 3) **Sunsail**
 - a) Accommodation aboard a charter catamaran. Free but space is limited and will be allocated on a first come first served basis.
- 4) **Camping** (+599 557 1990)
 - a) Corralita beach or Stuart's garden, free but no comforts – bring your own tent.
 - b) Stuart's boat, free but small and basic – bring your own sheets and pillow.
 - c) Homestays may be available, contact us for details.

Let us know your accommodation needs and we will try to arrange something suitable.

Food etc

- 1) **Superette Oyster Pond**, small supermarket with basic food and drinks, fresh bread and pastries
- 2) **Captain Oliver's restaurant**, top class restaurant on the marina, discount for all competitors.
- 3) **Dinghy Dock**, sailors' bar, great food and drinks at good prices, live music Sunday night.
- 4) **Mamma's Pizzas**, good pizzas a short walk from the marina.
- 5) **Frigate**, traditional French food a short walk from the marina.
- 6) **Thaba Khadi**, interesting food in an arty atmosphere, short walk from the marina.